



2x Table - Division Facts!

We can use our knowledge of multiplication to learn matching division facts.

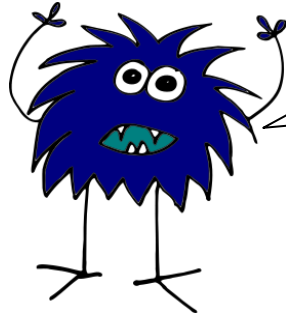
You can organise the facts into sets of 4 like this:

$$3 \times 2 = 6$$

$$2 \times 3 = 6$$

$$6 \div 3 = 2$$

$$6 \div 2 = 3$$



Have you noticed that in all four facts the numbers are the same? We just need to swap them around a little bit!

Now you try!

Use your knowledge of the 2x table to complete all of the fact families.

	Multiplication facts	Division facts		Multiplication facts	Division facts
A	$10 \times 2 =$	$20 \div 2 =$	F	$11 \times 2 =$	$22 \div$
	$2 \times 10 =$	$20 \div 10 =$		$2 \times 11 =$	$22 \div$
B	$4 \times 2 =$	$8 \div 2 =$	G	$5 \times 2 =$	$10 \div$
	$2 \times 4 =$	$8 \div 4 =$		$2 \times 5 =$	
C	$6 \times 2 =$	$12 \div 2 =$	H	$9 \times 2 =$	
	$2 \times 6 =$	$12 \div 6 =$		$2 \times 9 =$	
D	$3 \times 2 =$	$6 \div 2 =$	I	$12 \times 2 =$	
	$2 \times 3 =$	$6 \div 3 =$		$2 \times 12 =$	
E	$8 \times 2 =$	$16 \div 2 =$	J	$7 \times 2 =$	
	$2 \times 8 =$	$16 \div 8 =$			

Challenge!

Can you write the full multiplication and division fact families for these:

A. $20 \times 2 = 40$

B. $100 \times 2 = 200$

C. $50 \times 2 =$

D. $40 \times 2 =$